

ACCESSORIES & REPLACEMENT PARTS

3" Disc 6-Pack	304-6506
3" Disc 12-Pack	304-6512
Screw 3-Pack with High-Temp Lube (holds 8 to 22 discs)	304-7203
High-Temp Lube 3-pack	090-2622
Fiberglass Repack Kit	400-4020
Tapered End Cap	308-3340
2.5" Slash Cut End Cap	308-3560
8" long 2.5" Turn Down End Cap	308-3608
3.5" Turn Down/Out End Cap	308-3635
3" Open End Cap	304-3034
Final Assembly	628-78088
*Replacement Core	300-8173
*Hardware Kit	010-7805
*Body Assembly front/bottom Chrome	027-7087
*Body Assembly rear/top Chrome	027-7088

* Factory Order Only

CUSTOMER SERVICE

If you have any questions or problems, please call our technical support staff between 8am-12pm and 1pm-5pm Eastern Standard Time, (216) 265-8400, or by fax, (216) 265-0130.

Since 1975, SuperTrapp® has built a reputation on innovation and technical superiority.

SuperTrapp® R&D is constantly designing, testing and improving; providing you with the latest in state-of-the-art performance engineering. SuperTrapp® exhaust systems are absolutely the best bolt-on performance items available anywhere.

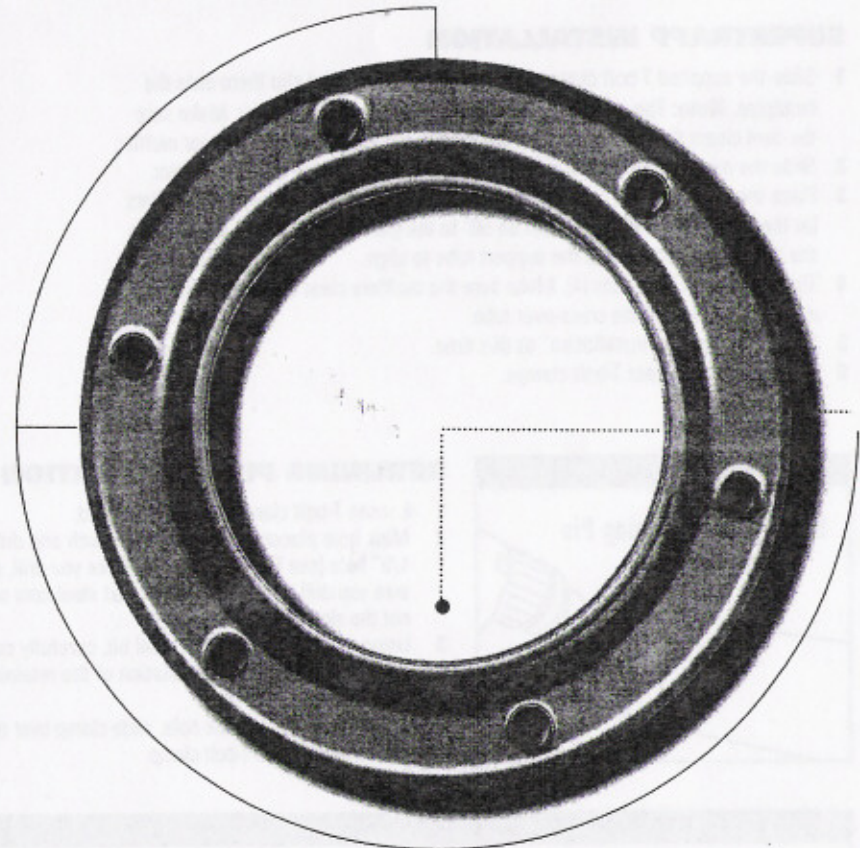
They will provide you with unmatched performance and years of trouble-free service.

SuperTrapp® Industries

4540 W. 160th St. Cleveland, Ohio 44135 (216) 265-8400 fax. (216) 265-0130
e-mail. sales@supertrapp.com www.supertrapp.com



003-7088 02.15.99



3" Chrome Internal Disc Series

Harley-Davidson FXD 1999

628-78088 Slip On Staggered Duals

003-7088 02.15.99

STOCK SYSTEM REMOVAL

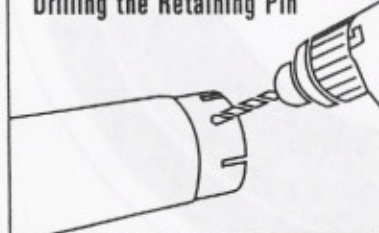
- 1 Remove the 4 nuts that secure the support tube to the back of the mufflers.
- 2 Remove the support tube. You will re-use the 4 nuts and support tube. Note the way it was mounted to the stock mufflers.
- 3 Loosen the front and rear muffler clamps and remove stock mufflers.

SUPERTRAPP INSTALLATION

- 1 Slide the supplied T-bolt clamp onto the new mufflers and slip them onto the headpipe. **Note:** The muffler with the dent is for the front cylinder. Make sure the dent clears the cross-over tube. The shinier of the two goes on the rear muffler.
- 2 Slide the new supplied muffler T-bolts into the slide bracket on the mufflers.
- 3 Place the stock support tube onto the mufflers. **Note:** The holes in the mufflers (at the rear of the muffler) should be 90° to the ground. You may need to rotate the mufflers slightly to get the support tube to align.
- 4 Tighten support tube nuts (4). Make sure the mufflers clear all parts of the machine, especially the cross-over tube.
- 5 See "Retaining Pin Installation" at this time.
- 6 Tighten front and rear T-bolt clamps.

FIGURE 1

Drilling the Retaining Pin



RETAINING PIN INSTALLATION

- 1 Loosen T-bolt clamp and slide forward.
- 2 Mark hole placement with center punch and drill a 1/8" hole (see Figure 1). **Note:** before you drill, make sure you drill through the perforated steel core and not the slotted portion.
- 3 Using only the tip of a 1/4" drill bit, carefully counter-sink the hole for flush installation of the retaining pin (see Figure 2).
- 4 Drop retaining pin in the hole, slide clamp over retaining pin and tighten T-bolt clamp.

FIGURE 2

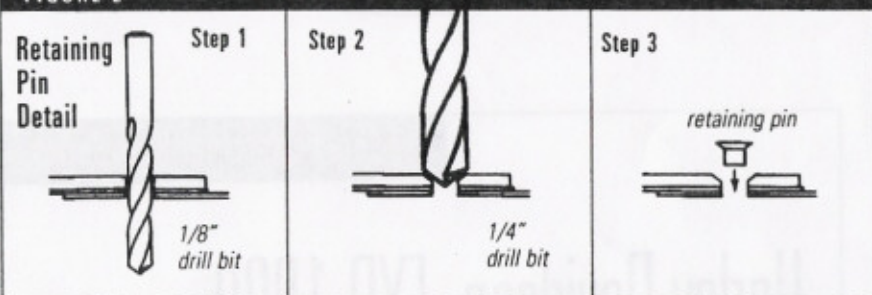
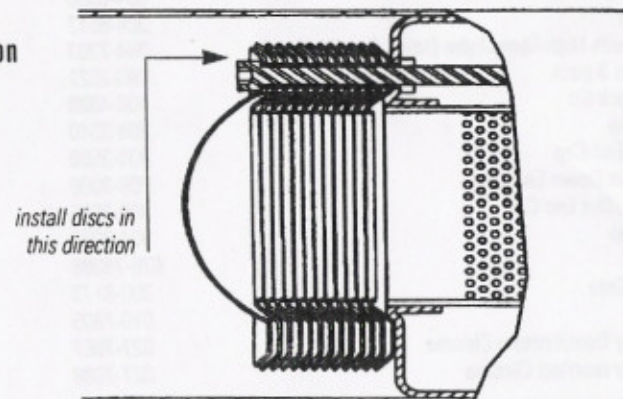


FIGURE 3

Disc Installation



DISC AND END CAP INSTALLATION

Install the diffuser discs with their outlets pointing toward the end cap as shown in Figure 3. To ease installation, first insert the 3 screws (with a small amount of Hi-Temp Lube) through the end cap and disc stack. Insert the entire assembly into the muffler using the supplied T-handle Hex Key into one of the screw heads as a handle. Tighten screws in a cross-pattern until snug. Do not over-tighten. It is essential that they are torqued evenly. Always use Hi-Temp Lube when installing or changing discs.

Insert tapered end caps into mufflers and install button head screws and lock washers using Hi-Temp Lube and hex key provided.

GENERAL TUNING

SuperTrapp® exhaust systems are uniquely tuneable. Back pressure and noise level are controlled by the number of discs used. **Note:** Increasing the number of discs creates a larger exhaust outlet area and therefore, causes less back pressure but more noise. Conversely, removing discs increases back pressure but reduces sound level.

Fourteen discs per muffler is recommended with stock intake specifications. In out facility, best all around performance was achieved with a Screamin' Eagle Air Cleaner Kit, Thunder Slide Jet Kit (185 main), 52 pilot jet and 16 discs.

For additional flow and/or sound, a 3" open end cap (part no. 304-3034) may be used. When replacing the closed end cap with the open end cap, you can subtract 3 discs to maintain the same overall flow.

IMPORTANT! Warranty does not cover chrome discoloration. You can minimize this problem by thoroughly cleaning and polishing the system before initial start-up, being sure the carburetion jetting is not too lean, and preventing long periods of stationary engine idle.