

## USE AND WARRANTY DISCLAIMER

Thank you for choosing the SuperTrapp Road Legends "FLH PHANTOM" pipes by Paul Yaffe. Please read the following disclaimer carefully.

**Fitment:** This system was designed to fit all stock O.E.M. Harley-Davidson® Touring® models (FLH/FLT) 2010. Installation of this product on a custom Touring model with an aftermarket frame is at your own risk. Proper fitment and suitability of this product in your application must be decided by you. If this exhaust system is installed in such a manner that the mount brackets or pipe mounts are in a bind, this exhaust system will break. Please take your time when installing these pipes following the directions carefully and make sure they are suitable to your application. This system will NOT fit Harley-Davidson Sportster, FXD, FXR, or FLST/FXST models. If you are not sure, please feel free to contact Paul Yaffe Originals at (602) 840-4205 for technical assistance.

**Return/Warranty Policy:** All components carry a one year warranty against structural failure during the first 12-month period that follows the retail sales date. A dated sales receipt (Proof of Purchase) or copy must accompany all warranty returns. Any failure with- in this period will be replaced or repaired without charge and the freight will be prepaid. All warranty returns must have a Return Authorization Number (RMA#) from our Customer Service Department and the freight must be prepaid. SuperTrapp Industries reserves the right to refuse warranty on products where misuse or abuse is determined. All Return/Warranty issues must be dealt with from the original place of purchase. If an end user deals directly with SuperTrapp Industries, a \$25.00 service fee will be accessed.

**SuperTrapp Customer Service:** You may contact our Customer Service Department via e-mail at sales@SuperTrapp.com, or at (216)265-8400 between 8am-5pm Eastern Time.

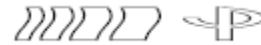
*Since 1975, SuperTrapp has built a reputation on innovation and technical superiority. SuperTrapp® R&D is constantly designing, testing and improving; providing you with the latest in state of the art performance engineering. SuperTrapp® products are absolutely the best performance items available. They will provide years of trouble-free service.*

SuperTrapp® Industries, Inc.

4540 W. 160th St. Cleveland, OH 44135  
Phone: (216) 265-8400 fax: (216)265-0130



003-7594 6-10-10



## Installation Instructions



**CAUTION:** Due to the stylized features of this Paul Yaffe designed head pipe, there will be reduced ground clearance during cornering, as compared to the stock system. Use caution when cornering with this system.

**Phantom Pipe™ by Paul Yaffe** Long, Baffled, Black Ceramic 2:1 Drag Pipe with Chrome Heat Shields.

**138-71594** For Harley-Davidson® FLH/FLT TOURING® Models with 12 mm O<sub>2</sub> sensors.

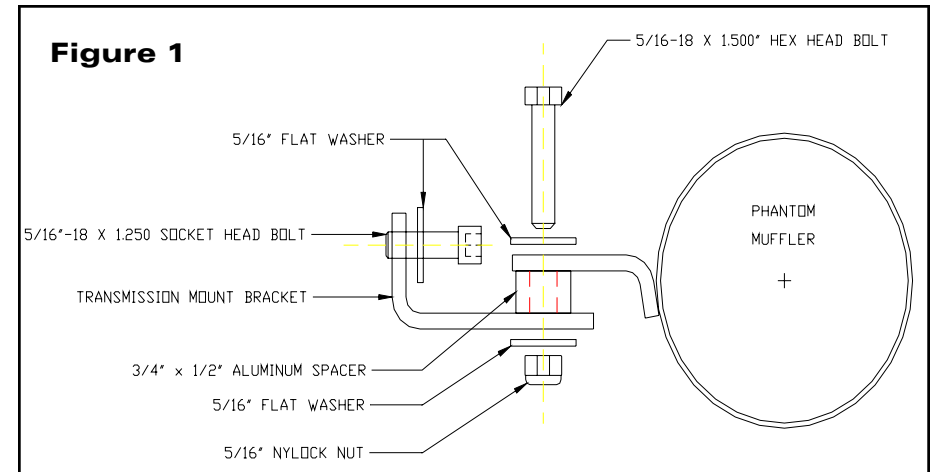
## Stock System Removal:

1. Remove the stock exhaust system as described in the service manual. Retain the flange nuts for the new system installation.
2. Remove the stock retainer clips and flanges from the head pipes and retain for the new system installation.
3. Remove the stock exhaust mounting bracket.
4. Remove oxygen sensors from the front and rear head pipes and retain for new system installation.
5. Remove the stock exhaust gaskets and replace them with new flat type exhaust gaskets (Screamin' Eagle part #17048-98). *We recommend these gaskets for maximum clearance between the front heat shield and frame tube. Conical gaskets can be used but they will reduce this clearance.*

## Phantom Pipe Installation:

1. Install the stock flanges and retainer clips on both head pipes.
2. Remove the bottom two bolts from the transmission cover. Install the new mounting bracket using the 1 1/4" long socket head bolts and flat washers supplied. Leave both bolts loose so that the bracket can slide back and forth freely. (See Figure 1)
3. Apply a **very light coating** of anti-seize to the threads of the oxygen sensors and install in new head pipes. (**VERY IMPORTANT:** Apply anti-seize to the threads of the oxygen sensor ONLY. Contamination of the sensor probe can adversely affect engine performance.)  
**NOTE:** The oxygen sensor connectors are color coded for proper installation. The GRAY (G) connector is for the FRONT head pipe sensor and the BLACK (B) connector is for the REAR head pipe.
4. Install the head pipe using the stock flange nuts. **DO NOT TIGHTEN.** Align the bracket on the pipe above the transmission mount bracket. Install aluminum spacer between the transmission mount bracket and the muffler bracket. Install the 5/16 bolt and flat washer through the slot from the top of the muffler bracket through the spacer and transmission mount. Install a flat washer and lock nut on the bolt. (See Figure 1) **DO NOT TIGHTEN.**
5. Checking alignment and clearance as you go, start tightening all fasteners. Start with the bolts holding the bracket to the transmission, then the head pipe at both ports, and finally the head pipe to the mount bracket.
6. Reconnect oxygen sensors to wiring harness. See note in step 3 for proper connection.

**IMPORTANT: AFTER A SHORT RIDE CHECK AND RETIGHTEN ALL FASTENERS.**



## Tuning Tips:

For maximum performance gains, we suggest using a free-flowing air filter kit with this exhaust system. As always, making performance modifications may affect the fuel delivery system of your motorcycle. It is recommended by Supertrapp to have your motorcycle tuned to ensure maximum performance and reliability. This work should always be performed by a certified technician.