

CORE REPLACEMENT PARTS

Universal Silencer Part No.'s	Core Part No.	
311-15016	310-15016	041-2208
311-15019	310-15019	041-2215
311-17516	310-17516	041-2217
311-17519	310-17519	041-2212
311-17524	310-17524	041-2220
311-20016	310-20016	041-2210
311-20019	310-20019	041-2206
319-17519	312-17519	041-2213
319-15016	312-15016	041-2238
312-15019	319-15019	041-2216
312-17516	319-17516	041-2237
312-20016	319-20016	041-2211
312-20019	319-20019	041-2207

BODY REPLACEMENT PARTS

Universal Silencer Part No.'s	Body Part No.	
311-15016	312-15016	027-1224
310-15016	319-15016	027-1223
311-15019	312-15019	027-1227
310-15019	319-15019	027-1225
311-17516	312-17516	027-1222
310-17516	319-17516	027-1221
311-17519	312-17519	027-1228
310-17519	319-17519	027-1229
311-17524		027-1230
310-17524		027-1231
311-20016	312-20016	027-1220
310-20016	319-20016	027-1219
311-20019	312-20019	027-1218
310-20019	319-20019	027-1217

SILENT SPORT PACKING REPLACEMENT PARTS

Universal Silencer Part No.	Silent Sport Part No.
311-15019	004-3211
310-15019	004-3211
311-17519	004-3211
310-17519	004-3211
311-20019	004-3211
310-20019	004-3211
311-15016	004-3209
310-15016	004-3209
311-17516	004-3209
310-17516	004-3209
311-17524*	004-3209
310-17524*	004-3209
311-20016	004-3209
310-20016	004-3209
319-17519	004-3511
319-20019	004-3511
312-15019	004-3511
319-15019	004-3511
312-17519	004-3511
312-20019	004-3511
319-15016	004-3509
312-15016	004-3509
312-17516	004-3509
319-17516	004-3509
312-20016	004-3509
319-20016	004-3509

* Qty.(2) of 004-3209 needed to repack muffler.



Since 1975, SuperTrapp® has built a reputation on innovation and technical superiority. SuperTrapp® R&D is constantly designing, testing and improving; providing you with the latest in state-of-the-art performance engineering. The SuperTrapp® IDS2 Quiet Series and Racing Series are absolutely the best bolt-on performance items available. They will provide years of trouble-free service.

SuperTrapp® Industries, Inc.
 4540 W. 160th St. Cleveland, Ohio 44135 (216) 265-8400 fax. (216) 265-0130
 e-mail. sales@supertrapp.com | www.supertrapp.com

003-2265 10.14.99

IDS2 Internal Disc Series

The SuperTrapp® Universal Silencer

RETAINING PIN INSTALLATION

- 1 Loosen T-bolt clamp and slide up S-bend.
- 2 Mark hole placement with center punch and drill a 1/8" hole (see Fig.1).
Note: before you drill, make sure you drill through the perforated steel core and not the slotted portion.
- 3 Using only the tip of a 1/4" drill bit, carefully counter sink the hole for flush installation of the retaining pin (see Fig 2).
- 4 Drop retaining pin in the hole, slide clamp over retaining pin and tighten T-bolt clamp.

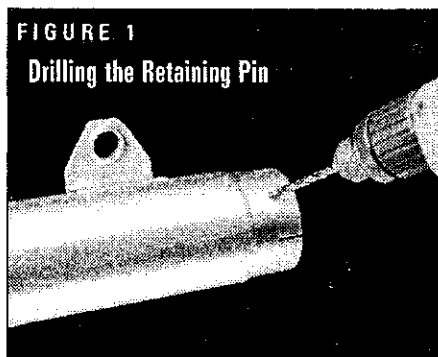


FIGURE 1
Drilling the Retaining Pin

FIGURE 2

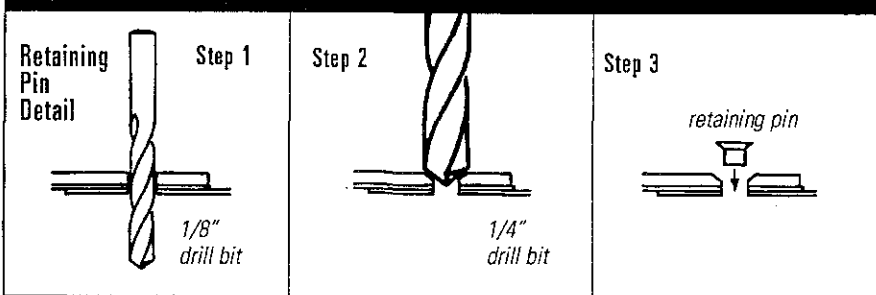
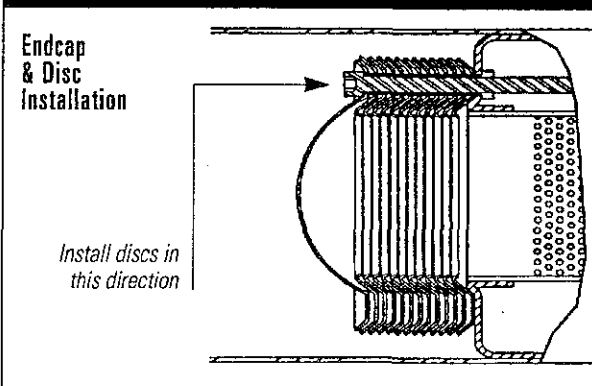


FIGURE 3



END CAP & DISC INSTALLATION

Install the disks with their outlets pointing towards the end cap. To ease installation, first insert three screws (coat the threads with supplied high temp lube) through the endcap and disc stack. The blank disc (with no center hole) should be placed on the disc stack last (on the end closest to the exhaust opening). While holding the silencer body horizontal, insert the entire assembly into the body using the supplied T-handle hex key inserted into one of the screw heads as a handle. Rotate the silencer vertically so the discs drop against the core. Tighten screws in a cross pattern to approximately 15 in.-lbs. torque. It is essential that they are torqued evenly.

GENERAL TUNING

SuperTrapp® exhaust systems are uniquely tuneable. Back pressure and noise level are controlled by the number of discs used. Adding discs creates a larger exhaust outlet which reduces back pressure and increases sound level. Richer jetting will be required in this case to match air flow. Using fewer discs decreases the exhaust outlet, which increases back pressure and reduces sound level.

All SuperTrapps® are USFS Approved Spark Arrestors and are legal regardless of the number of discs installed providing the closed end cap is used. The optional Open End Cap is designed for Closed-Course-Competition only and will void the spark arrestor function. The Quiet Series is supplied with 12 discs; the Racing Series is supplied with 18 discs (plus one blank disc described above) to provide a range of tuneability. Additional discs are available in 6 or 12 packs.

QUIET SERIES VERSUS RACING SERIES

The Quiet Series is designed to achieve significant increases while retaining near stock noise levels. For stock and mildly modified engines, the Quiet Series will offer the same performance advantage as the Racing Series but with significantly lower sound.

The Racing Series is designed for Closed-Course-Competition only. It will not meet the necessary sound regulations for street or trail use. Replacement cores are available to convert from Racing to Quiet or Quiet to Racing Series.

QUIET SERIES TUNING

The Quiet Series combines an efficient reverse flow core with the tuneable diffuser disc outlet. For stock engines and jetting, 6 to 8 discs is ideal. Unlike the Racing Series, the core itself does provide some back pressure that can not be eliminated simply by adding discs. For this reason, 10 to 12 discs is the practical maximum that should be used. In other words, adding more discs will not reduce the overall back pressure further. *Important: On Quiet Series mufflers, when using 10 discs or less, use the 8/32" x 1 1/4" fastener (provided). Using the 8/32" x 2" fastener with 10 discs or less will bottom out on the core.*

RACING SERIES TUNING

The Racing Series uses a straight through perforated core. Back-pressure is controlled entirely by the discs since the core itself adds no back-pressure. This gives almost infinite tuneability to match any degree of engine modification. Eight to ten discs will work best on a stock engine with stock jetting.

ACCESSORIES AND REPLACEMENT PARTS

When ordering accessories or replacement parts you may need the part number of this silencer. Please record the part number and date of manufacture here.

Part No. _____ Date of Manufacture _____

Endcap Assembly, Nameplate and Rivets	305-3525
3 Bolt Open End Cap (Closed Course Comp. Only)	304-3034
3 Pack of Screws with Hi-Temp. Lube	304-7203
High Temp. Lube	090-2622
Disc Pack (6 Discs)	304-6506
Disc Pack (12 Discs)	304-6512

Please refer to the chart on the back of this sheet for Body, Core and Silent Sport Replacement Part No.s to fit your Universal Silencer.